



**Special Rules for the Control of Concrete Blocks in the Emirate of Dubai
as per Local Order 44/1990 (Amended 2010)**

Dubai Central Laboratory- Inspection And Certification Section

Doc. Ref :RD-DP21-2004 (IC)

Rev. No.: 2

Issue Date :23/08/2010

Page :1 of 5

Issue Date	Rev. No.	Summary Of Amendments
26-04-2010	0	First draft
27-05-2010	0	Final draft
01-06-2010	1	Issue for use
23-08-2010	2	Corrected typographical error in clause numbers

Prepared by

Authorized by

Note: Printed copy of this document shall be treated as 'Uncontrolled'. Always refer the controlled version Online



**Special Rules for the Control of Concrete Blocks in the Emirate of Dubai
as per Local Order 44/1990 (Amended 2010)**

Dubai Central Laboratory- Inspection And Certification Section

Doc. Ref :RD-DP21-2004 (IC)

Rev. No.: 2

Issue Date :23/08/2010

Page :2 of 5

1. INTRODUCTION

- 1.1 Local Order 44/1990 (As Amended) requires concrete blocks to be certified by DCLD in accordance with the factory assessment system as described in RD-DP21-2001 (IC) "General rules for third party certification through factory assessment" and the relevant specific rules for each particular type of block. However, the Local Order includes other provisions that are outside the scope of the "General" and "Specific" rules.
- 1.2 Therefore, this document provides additional rules and procedures for the implementation of other provisions of the Local Order that are not covered by, (or, are not in accordance with) the general and specific rules for factory assessment certification. These provisions include (among others), registration of the block factories, inspection of block factories and construction sites, certification fees, penalties and violations, etc.
- 1.3 This document shall complement the other applicable documents under the factory assessment certification system, i.e. RD-DP21-2001 (IC) General rules for factory assessment; Specific Rules for each type of precast concrete block; etc.
- 1.4 The provisions of this document shall take precedence over the General and Specific rules in case of conflict or inconsistencies in their contents.

2. SCOPE

- 2.1 Block factories that are manufacturers of precast concrete blocks covered by Local Order 44/1990 (Amended 2010) shall comply with these Special Rules. DCLD shall apply these special rules in the certification and registration of the block factories.

3. DEFINITION OF TERMS

For the purpose of these Special Rules, the following definitions shall apply:

- 3.1 Local Order - refers to Local Order 44/1990 as amended in 2010
- 3.2 Precast concrete blocks - refers to the precast concrete blocks covered by the provisions of Local Order and the related Admin decisions.
- 3.3 List of Registered Block Factories – a list published and maintained by DCLD containing the block factories that are allowed to supply precast concrete blocks in the Emirate of Dubai.
- 3.4 Mark of Conformity - refers to the DCL Product Conformity Mark
- 3.5 Certificate of Product Conformity (also referred to as the "License") – a certificate issued by DCLD to a manufacturer attesting that that the product(s) conforms to DMS Specifications and giving license to the manufacturer to apply the DCL Conformity Mark on the product (or its packaging/label).

4. APPLICABLE DOCUMENTS

- 4.1 DM Local Order 44/1990 (Amended 2010) and the related Administrative Decisions and Circulars.
- 4.2 DMS Specifications – for the implementation of the Local Order, the relevant DMS Specifications are as follows:
 - a. DMS 1 Part 1 Masonry hollow blocks
 - b. DMS 1 Part 2 Filler blocks
 - c. DMS 1 Part 4 Paving blocks

Prepared by

Authorized by

Note: Printed copy of this document shall be treated as 'Uncontrolled'. Always refer the controlled version Online



**Special Rules for the Control of Concrete Blocks in the Emirate of Dubai
as per Local Order 44/1990 (Amended 2010)**

Dubai Central Laboratory- Inspection And Certification Section

Doc. Ref :RD-DP21-2004 (IC)

Rev. No.: 2

Issue Date :23/08/2010

Page :3 of 5

d. DMS 1 Part 5 Concrete polystyrene thermal blocks

4.3 General Rules - RD-DP21-2001 (IC) "General rules for third party product certification through factory assessment."

4.4 Specific Rules - are DCLD documented procedures for certification according to the specific requirements of each DMS Specification. The applicable Specific Rules are:

a. RD-DP21-2169 (IC) Certification of precast concrete masonry blocks as per DMS 1: Part 1

b. RD-DP21-2170 (IC) Certification of precast concrete filler blocks as per DMS 1: Part 2

c. RD-DP21-2172 (IC) Certification of precast concrete paving blocks as per DMS 1 Part 4

d. RD-DP21-*nnnn* (IC) Certification of precast concrete-polystyrene blocks as per DMS 1 Part 5

5. GENERAL PROVISIONS

5.1 For all construction projects within the Emirate of Dubai, contractors and consultants shall use only precast concrete blocks that are certified by DCLD and supplied by a registered block factory.

5.2 Certification and registration shall be carried out by Dubai Central Laboratory Department in accordance with this document and all other applicable standards, rules, and procedures issued by DCLD. Block factories shall apply for certification and registration at DCLD.

5.3 Block factories that have completed the certification process shall automatically be registered in the "List of Registered Block Factories".

6. CERTIFICATION PROCESS

6.1 Block factories shall submit application for certification to DCLD, Inspection and Certification Section using the appropriate forms and together with supporting documents and applicable fees.

6.2 Certification shall be carried out in accordance with the DCLD "Third party product certification through factory assessment" scheme; and, against the requirements of the documents mentioned in clause [4].

6.3 Block factories that pass the assessment process shall be awarded the Certificate of Product Conformity (*also called "License" to use the DCL Conformity Mark*). The Certificate/License shall have an accompanying "Scope of Certification" giving details of the blocks covered by the certification.

7. REGISTRATION OF LICENSED BLOCK FACTORIES

7.1 Block factories that are awarded the Certificate of Product Conformity shall be automatically registered in the "List of Registered Block Factories" issued and maintained by DCLD.

7.2 The block factories shall remain in the "List of Registered Block Factories" provided they continue to comply with the requirements of the Local Order and their License remains valid.

8. DOCUMENTS AND RECORDS MAINTENANCE

8.1 Registered block factories shall maintain quality system and quality assurance records in accordance with the General and Specific Rules of the certification scheme.

8.2 Registered Block Factories shall maintain production records of the precast concrete blocks covered by their Scope of Certification.

Prepared by

Authorized by

Note: Printed copy of this document shall be treated as 'Uncontrolled'. Always refer the controlled version Online



**Special Rules for the Control of Concrete Blocks in the Emirate of Dubai
as per Local Order 44/1990 (Amended 2010)**

Dubai Central Laboratory- Inspection And Certification Section

Doc. Ref :RD-DP21-2004 (IC)

Rev. No.: 2

Issue Date :23/08/2010

Page :4 of 5

8.3 Registered Block Factories shall maintain (for regulatory inspection purposes) the sales and delivery records of precast concrete blocks covered by their Scope of Certification (according to DM Standard Form).

9. INSPECTION AND SURVEILLANCE

9.1 DCLD shall carry out regular factory audit and market surveillance of certified products in accordance with the General and Specific Rules of the certification scheme.

9.2 Samples shall be collected and tested during the factory and market surveillance in order to ensure that they continue to comply with the requirements of the Local Order.

9.3 In addition to the factory and market surveillance as required by the General and Specific Rules, DCLD inspectors shall carry out regulatory inspection of block factories and construction sites to verify continuing compliance with the provisions of the Local Order and related Administrative Decisions and Circulars.

10. VIOLATIONS/NON-COMPLIANCE AND PENALTIES

10.1 Violations and non-compliances are under two main categories as follows:

- a. Violation of the provisions of the Local Order and the related Admin Decisions.
- b. Non-compliance with the General and Specific Rules of the product certification scheme;

10.2 Penalties:

- a. Penalties for violation of the provisions of the Local Order shall be in accordance with the relevant clause in the Local Order and in the related Admin Decisions.
- b. Penalties for non-compliance with the provisions of the General and Specific Rules of the certification shall be in accordance with the relevant RD (Reference Document) for "Suspension, cancellation and withdrawal of certification" under the factory assessment scheme.

11. FEES

11.1 The fees shall be in accordance with RD-DP21-2089 (IC) Fee Structure for certification of precast concrete blocks under Local Order 44/1990 (Amended 2010).

12. FLOWCHART

(next page)

Prepared by

Authorized by

Note: Printed copy of this document shall be treated as 'Uncontrolled'. Always refer the controlled version Online



**Special Rules for the Control of Concrete Blocks in the Emirate of Dubai
as per Local Order 44/1990 (Amended 2010)**

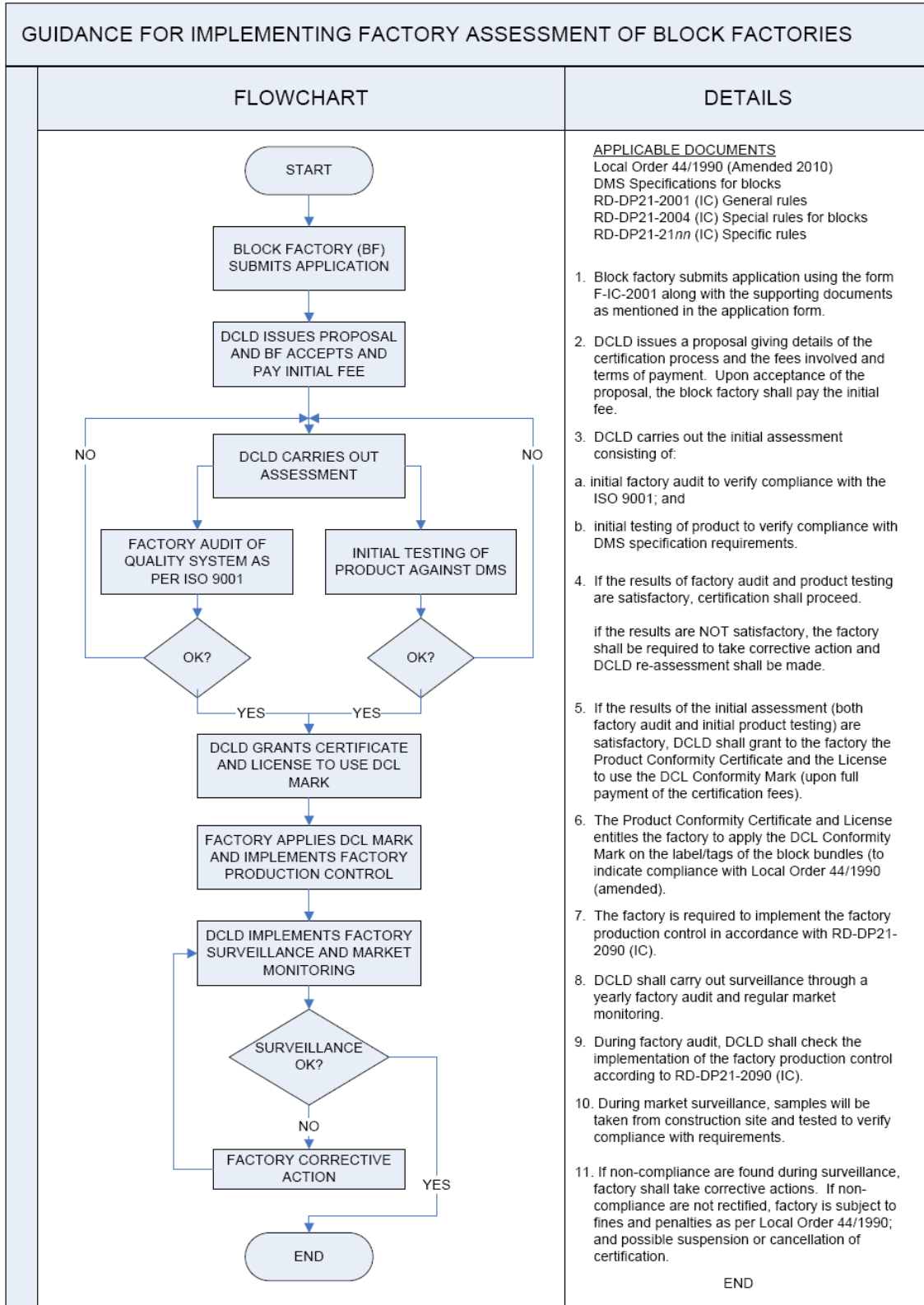
Dubai Central Laboratory- Inspection And Certification Section

Doc. Ref :RD-DP21-2004 (IC)

Issue Date :23/08/2010

Rev. No.: 2

Page :5 of 5



Prepared by

Authorized by

Note: Printed copy of this document shall be treated as 'Uncontrolled'. Always refer the controlled version Online